

# ISSF Prone Women – Wertung Women

StandNr: 43

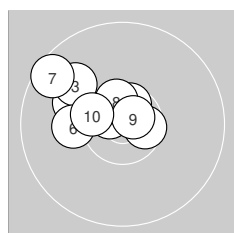
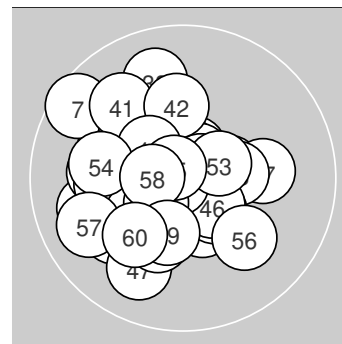
MATTE, Romane #999903793

StartNr: 175

30. April 2023 11:06

Frankreich

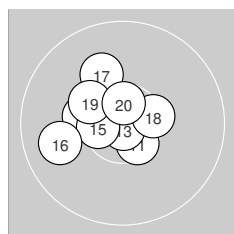
Ergebnis: **620.9** (594)  
 Serien: 103.5 104.1 103.2 103.8 102.6 103.7  
 Zähler: 54 6 0 0 0 0 0 0 0  
 Innenzehner: 36  
 Weitestе: 1102 (7.), 906 (57.), 875 (38.)  
 beste Teiler: 70.2 (51.), 73.9 (13.), 77.9 (31.)  
 Trefferlage: 1.95 mm links, 0.47 mm hoch  
 Streuwert: 3.56, horizontal: 3.57, vertikal: 3.55



**Serie 1:**

10.6 *	10.1 ↖	10.0 ↖	10.7 *	10.6 *
10.2 ←	9.6 ↖	10.6 *	10.7 *	10.4 *

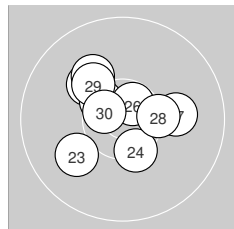
beste Teiler: 163.9 (9.), 190.5 (4.), 272.7 (5.)  
 Trefferlage: 2.91 mm links, 2.21 mm hoch  
 Streuwert: 3.24, horizontal: 4.03, vertikal: 2.20



**Serie 2:**

10.5 *	10.6 *	10.9 *	10.3 *	10.5 *
9.9 ←	10.1 ↖	10.4 *	10.3 *	10.6 *

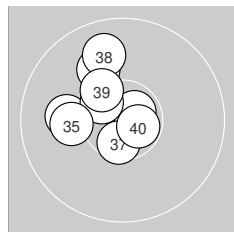
beste Teiler: 73.9 (13.), 258.3 (20.), 279.6 (12.)  
 Trefferlage: 1.98 mm links, 0.77 mm hoch  
 Streuwert: 3.14, horizontal: 3.56, vertikal: 2.67



**Serie 3:**

10.2 ↖	10.5 *	10.0 ↗	10.4 *	10.1 ↖
10.7 *	10.1 →	10.4 *	10.2 ↖	10.6 *

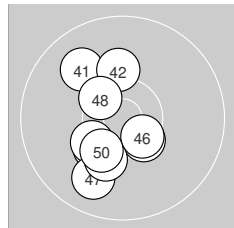
beste Teiler: 235.1 (26.), 255.7 (30.), 365.5 (22.)  
 Trefferlage: 0.87 mm links, 1.21 mm hoch  
 Streuwert: 3.87, horizontal: 4.27, vertikal: 3.42



**Serie 4:**

10.9 *	10.7 *	10.0 ←	10.5 *	10.1 ←
10.0 ↖	10.6 *	9.9 ↖	10.4 *	10.7 *

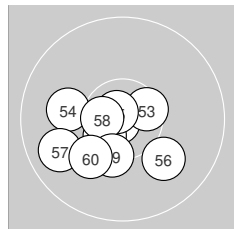
beste Teiler: 77.9 (31.), 184.4 (32.), 217.6 (40.)  
 Trefferlage: 2.11 mm links, 1.89 mm hoch  
 Streuwert: 3.32, horizontal: 3.15, vertikal: 3.48



**Serie 5:**

9.9 ↖	10.2 ↑	10.3 ↗	10.3 *	10.5 *
10.5 *	9.9 ↘	10.5 *	10.2 ↘	10.3 *

beste Teiler: 349.5 (46.), 388.7 (48.), 395.3 (45.)  
 Trefferlage: 1.97 mm links, 1.44 mm tief  
 Streuwert: 3.92, horizontal: 2.73, vertikal: 4.82



**Serie 6:**

10.9 *	10.6 *	10.5 *	10.1 ←	10.8 *
10.0 ↖	9.8 ←	10.6 *	10.3 *	10.1 ↗

beste Teiler: 70.2 (51.), 118.4 (55.), 265.2 (58.)  
 Trefferlage: 1.85 mm links, 1.78 mm tief  
 Streuwert: 3.48, horizontal: 4.11, vertikal: 2.70

