

# ISSF Prone Women J – Wettbewerb Junior Women

StandNr: 45

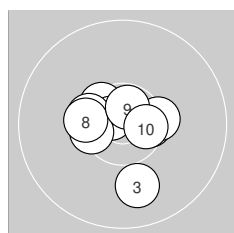
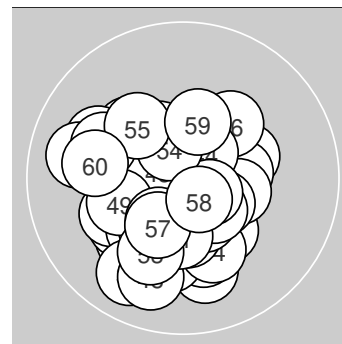
WALRATH, Emme #999903783

StartNr: 186

30. April 2023 12:55

Winning Solution

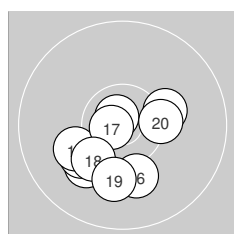
Ergebnis: **620.9** (596)  
 Serien: 104.6 102.8 103.8 102.3 103.8 103.6  
 Zähler: 56 4 0 0 0 0 0 0 0  
 Innenzehner: 36  
 Weitester: 916 (30.), 900 (39.), 878 (48.)  
 beste Teiler: 50.4 (29.), 129.0 (41.), 129.2 (11.)  
 Trefferlage: 1.08 mm links, 1.34 mm tief  
 Streuwert: 3.53, horizontal: 3.55, vertikal: 3.52



**Serie 1:**

10.5 *	10.5 *	10.0 ↓	10.7 *	10.4 *
10.4 *	10.4 *	10.4 *	10.7 *	10.6 *

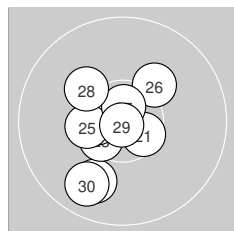
beste Teiler: 164.1 (4.), 223.7 (9.), 297.6 (10.)  
 Trefferlage: 0.36 mm links, 0.14 mm tief  
 Streuwert: 3.19, horizontal: 3.47, vertikal: 2.88



**Serie 2:**

10.8 *	10.2 →	10.1 ↙	10.1 ↙	10.1 ↙
10.1 ↓	10.8 *	10.2 ↘	10.1 ↓	10.3 *

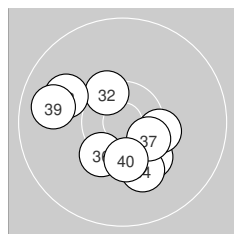
beste Teiler: 129.2 (11.), 145.7 (17.), 486.2 (20.)  
 Trefferlage: 1.08 mm links, 2.65 mm tief  
 Streuwert: 3.64, horizontal: 4.03, vertikal: 3.20



**Serie 3:**

10.6 *	9.9 ↙	10.5 *	10.6 *	10.4 *
10.2 ↗	10.7 *	10.2 ↘	10.9 *	9.8 ↙

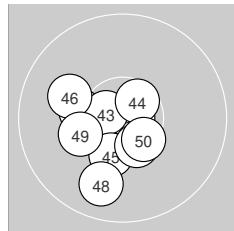
beste Teiler: 50.4 (29.), 184.4 (27.), 313.7 (21.)  
 Trefferlage: 1.63 mm links, 1.03 mm tief  
 Streuwert: 3.72, horizontal: 3.14, vertikal: 4.22



**Serie 4:**

10.2 ↓	10.4 *	10.2 ↓	10.1 ↓	10.4 *
10.3 *	10.5 *	10.0 ↖	9.8 ↖	10.4 *

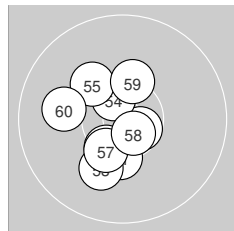
beste Teiler: 392.7 (37.), 421.4 (32.), 479.9 (40.)  
 Trefferlage: 0.31 mm links, 1.86 mm tief  
 Streuwert: 4.22, horizontal: 4.72, vertikal: 3.65



**Serie 5:**

10.8 *	10.3 ←	10.7 *	10.6 *	10.3 *
10.0 ↖	10.5 *	9.9 ↓	10.2 ↖	10.5 *

beste Teiler: 129.0 (41.), 221.0 (43.), 285.7 (44.)  
 Trefferlage: 1.60 mm links, 1.47 mm tief  
 Streuwert: 3.44, horizontal: 3.42, vertikal: 3.45



**Serie 6:**

10.3 *	10.6 *	10.1 ↙	10.6 *	10.2 ↘
10.4 *	10.4 *	10.7 *	10.3 *	10.0 ↖

beste Teiler: 226.2 (58.), 256.4 (52.), 282.0 (54.)  
 Trefferlage: 1.47 mm links, 0.86 mm tief  
 Streuwert: 3.44, horizontal: 2.88, vertikal: 3.93

